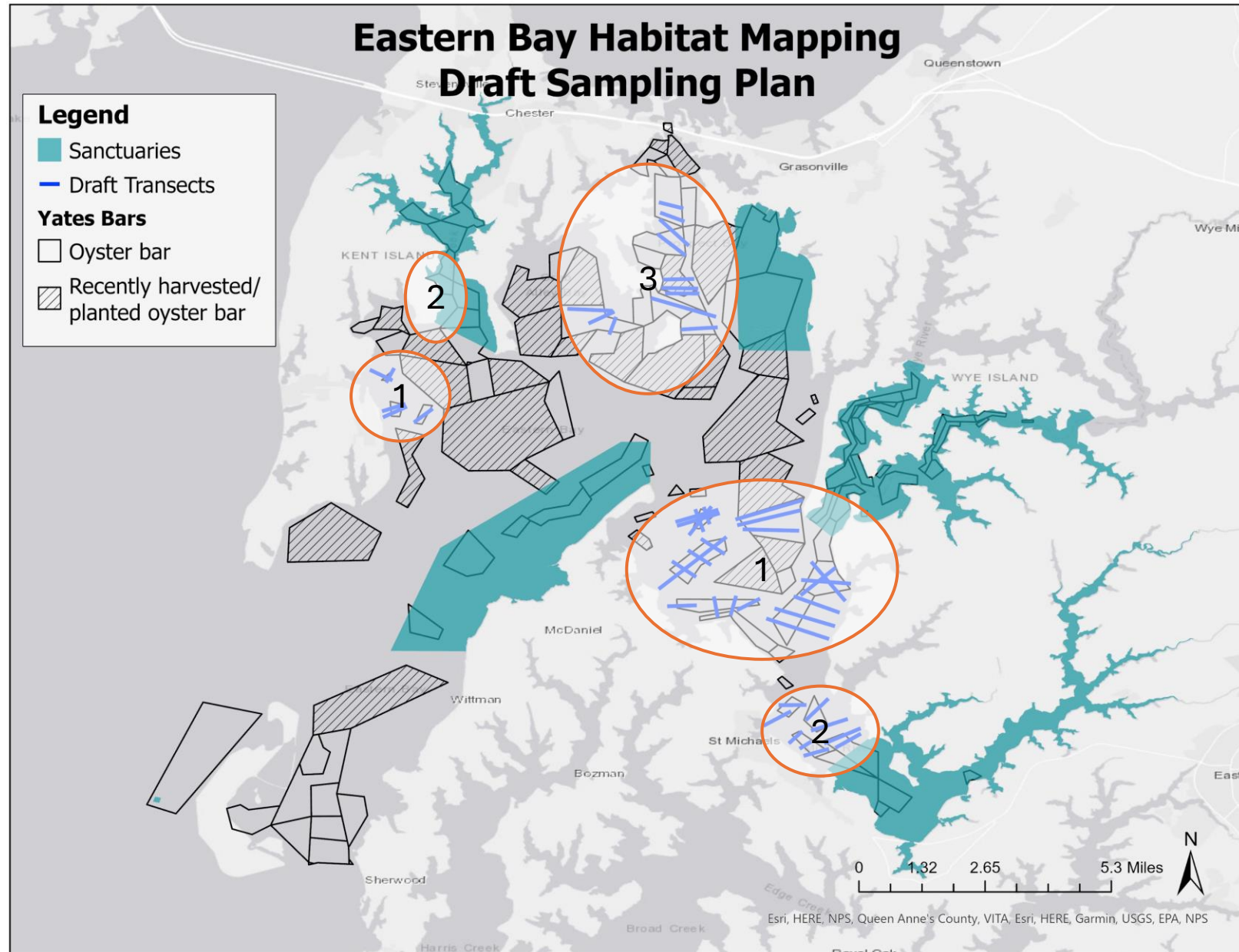


Habitat Mapping Update

Oyster Coalition Workgroup

Meeting 4

May 29-30, 2024



Sampling Plan

Phase I – ORP will survey all locations using the following gear:

- Video (stationary/ROV)
- Sounding pole
- Ponar sediment grabs

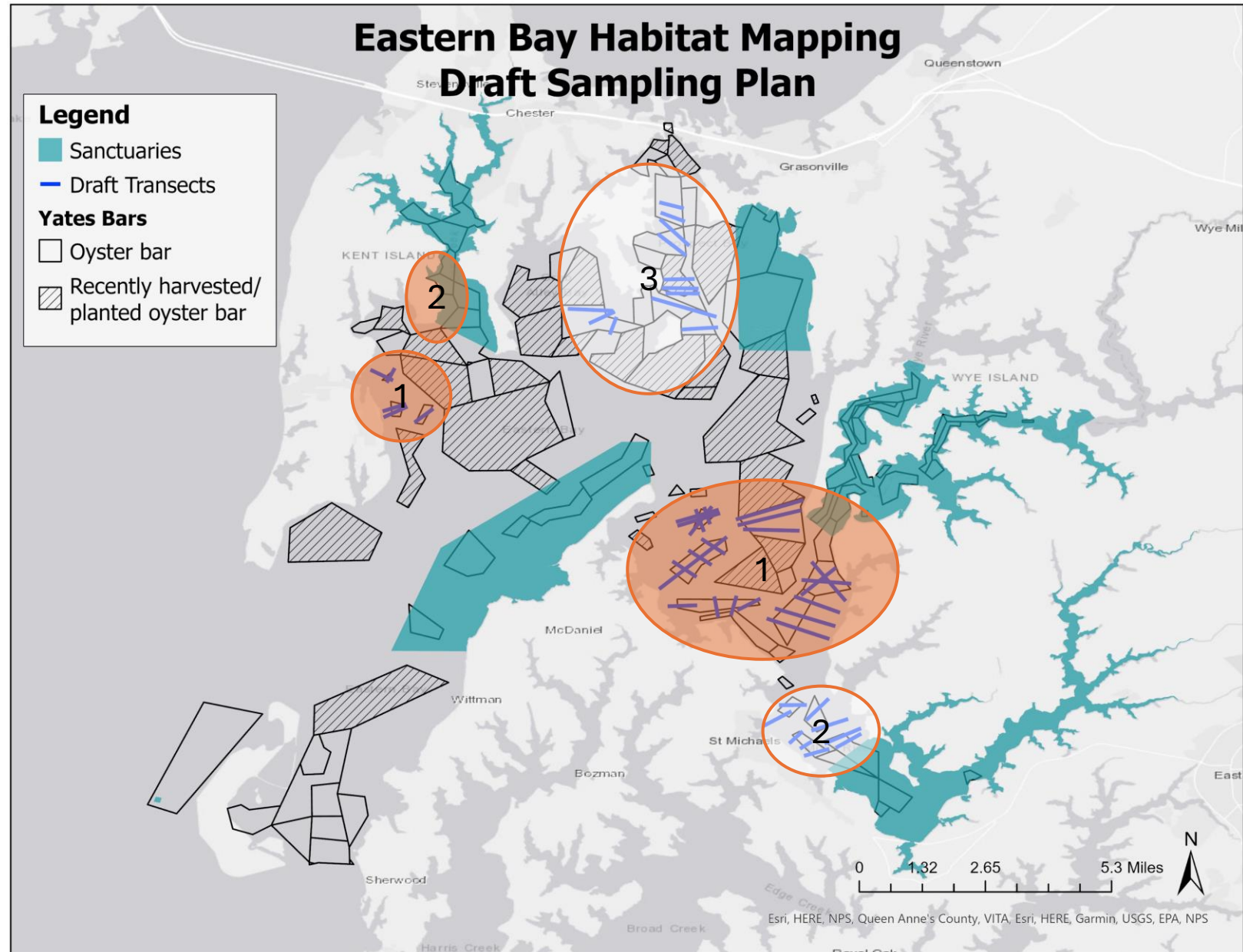
Phase II – Any locations that are identified as hard bottom with cultch will be resampled with patent tongs to assess the volume of cultch and density/characteristics of oysters

Sampling will be conducted in May-June and the results will be presented at the July OCW meeting (Meeting 4)

Progress through May 2024

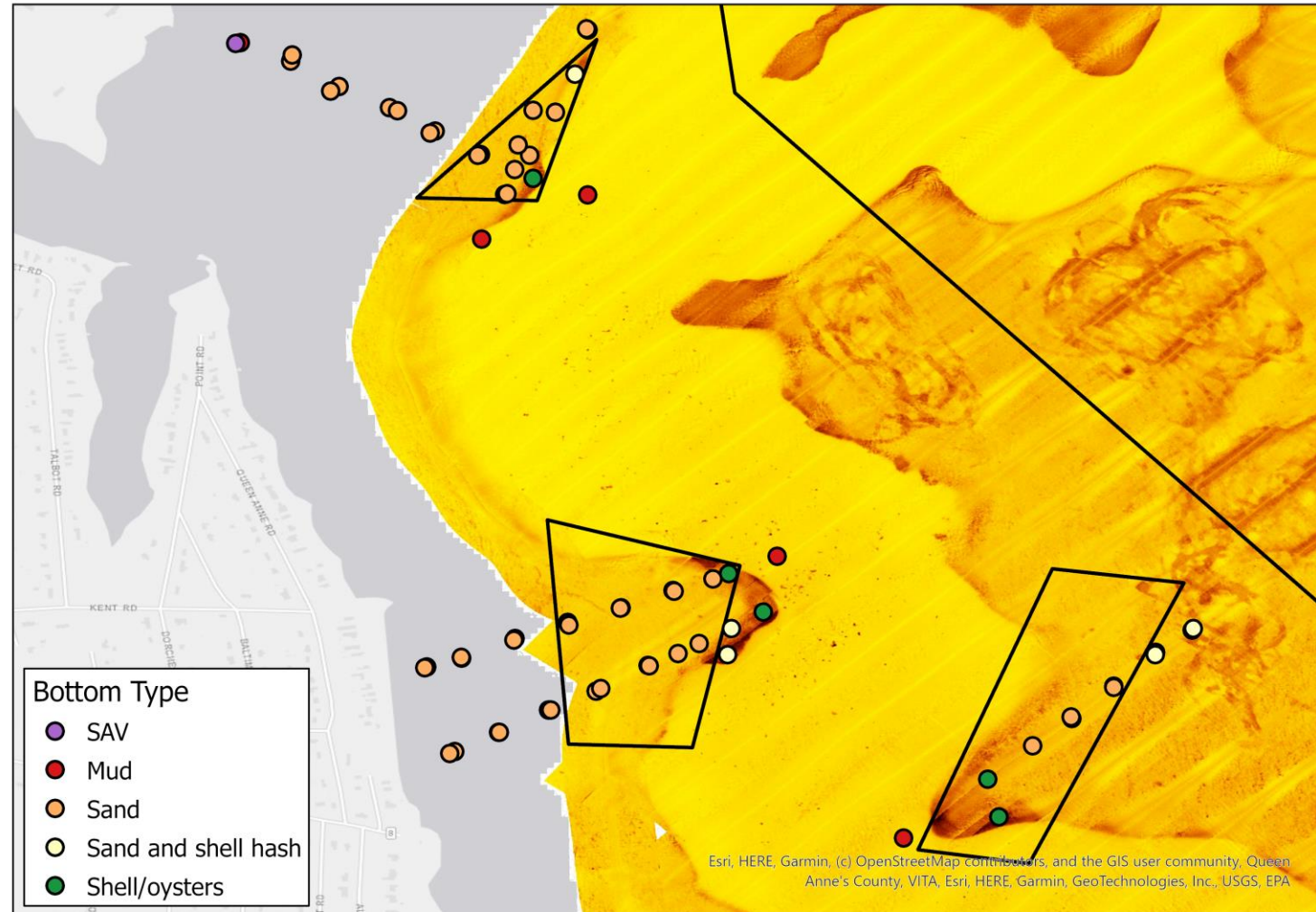
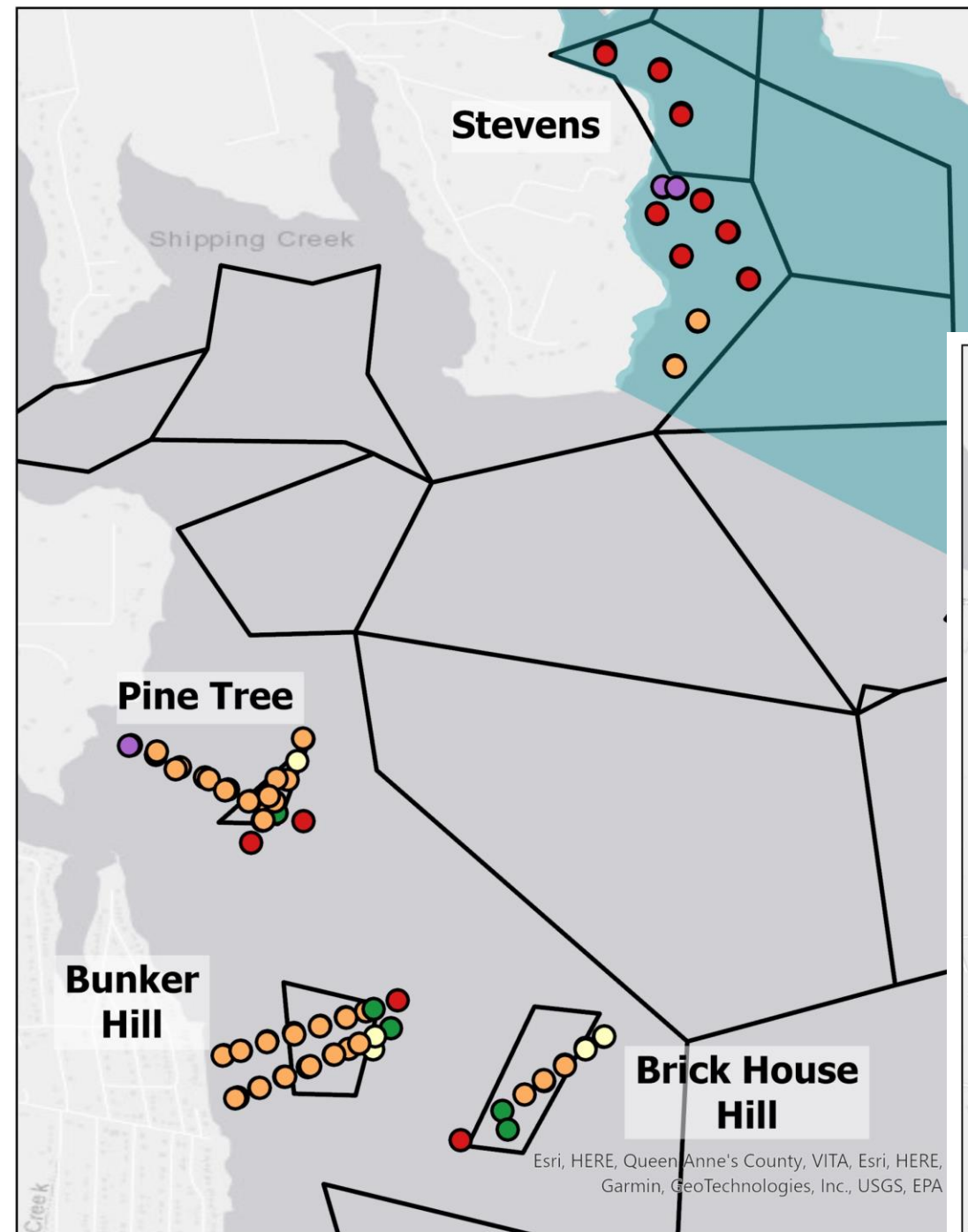
Phase I surveys
completed:

- NW EB
- Cox Creek
- Miles River Area 1 almost complete



West Eastern Bay

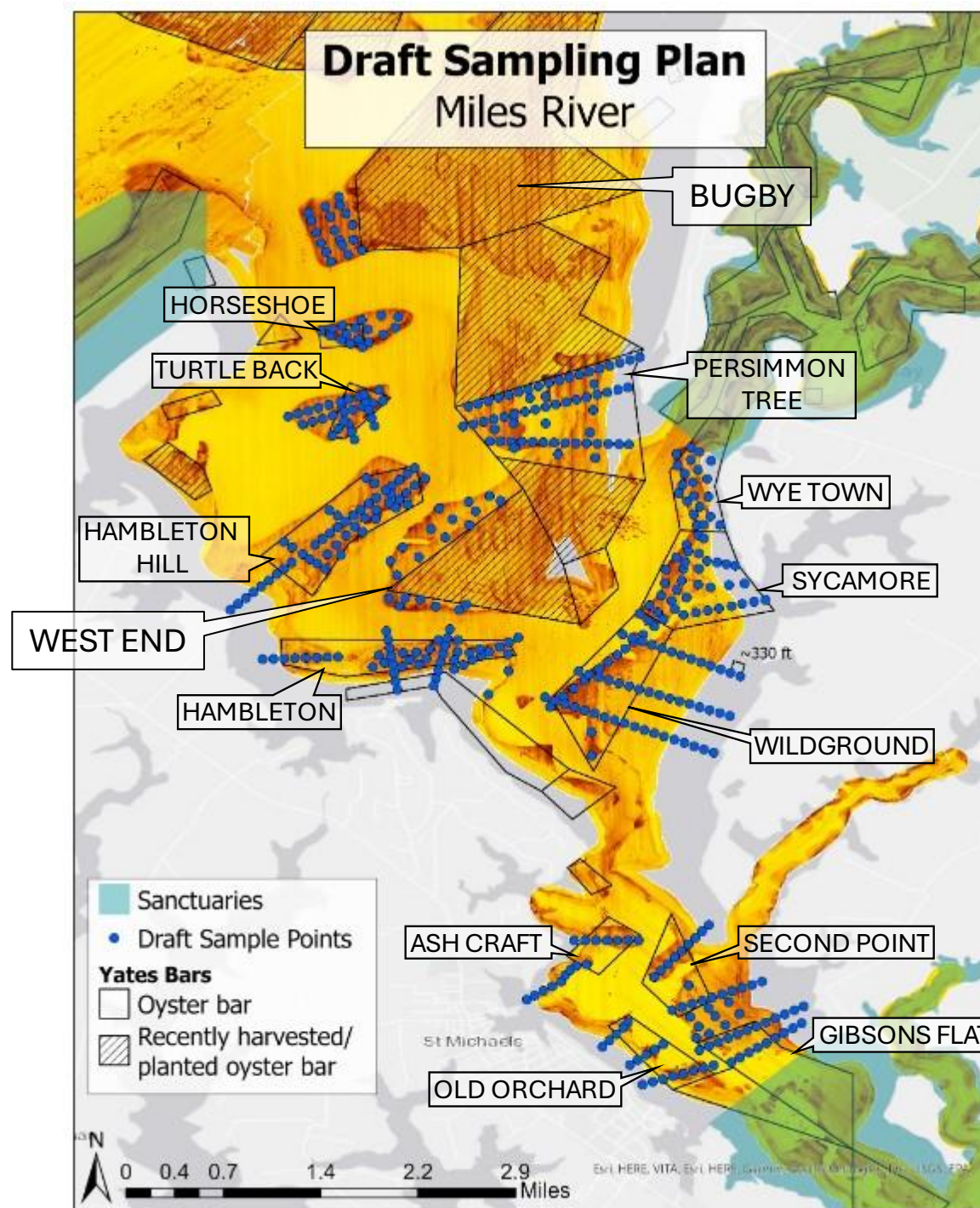
- Almost all sand/mud, very little shell
- A few areas with SAV



Miles River

Bars completed:

1. Horseshoe
2. Turtle Back
3. Hambleton Hill
4. Hambleton
5. Wye Town
6. Sycamore
7. Wildground



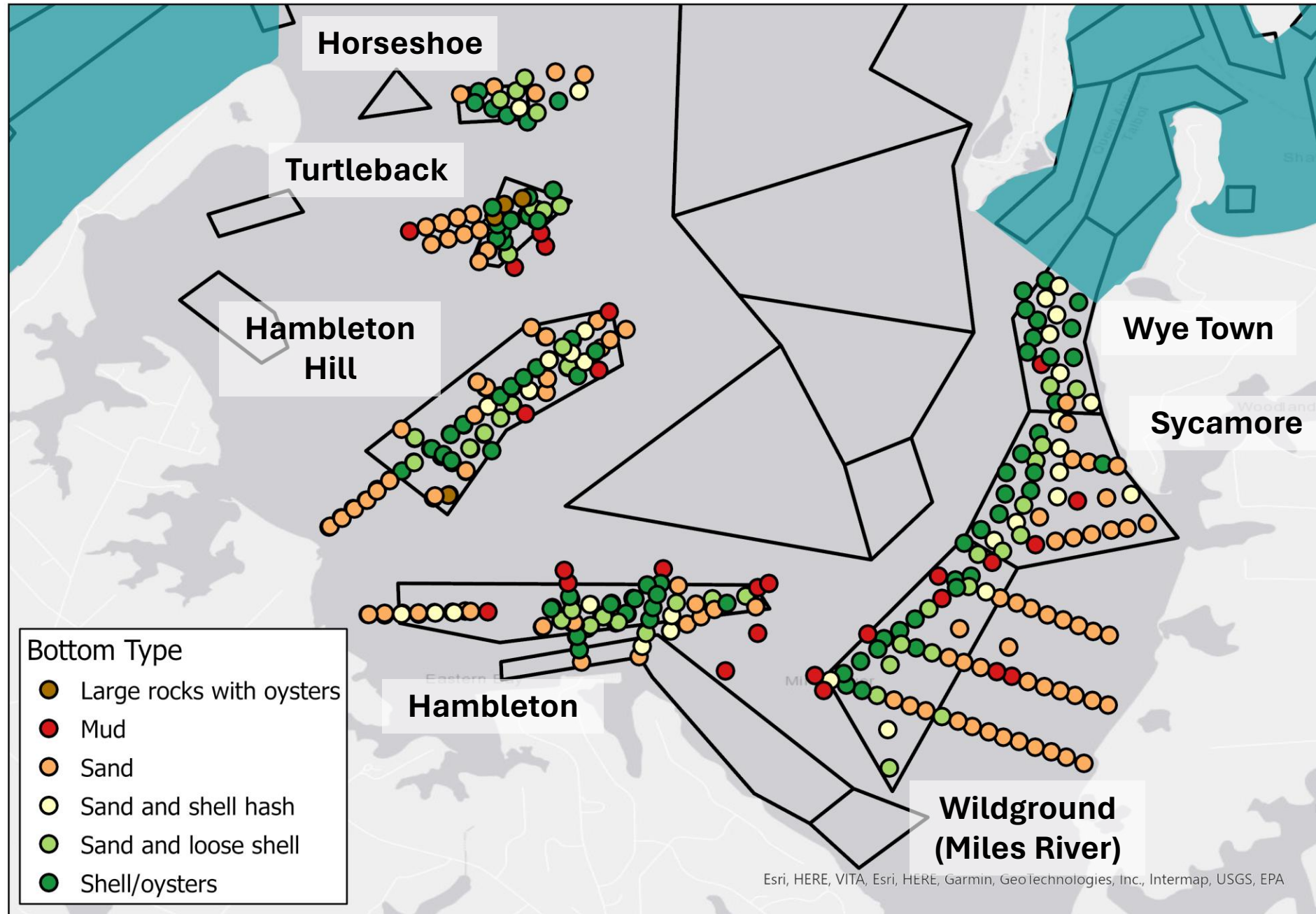
Bars to be completed:

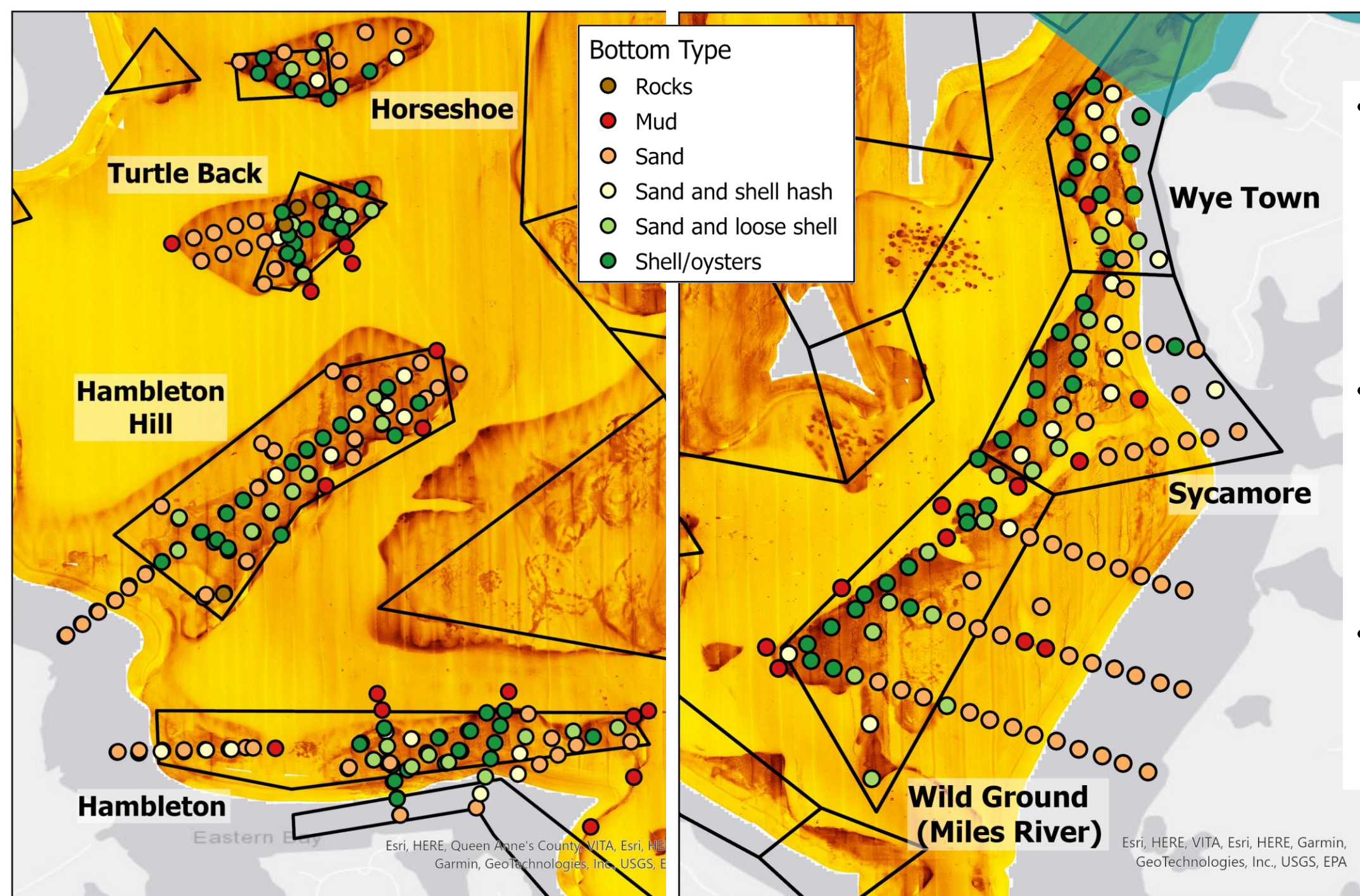
1. Persimmon Tree
2. Ash Craft
3. Second Points
4. Old Orchard
5. Gibsons Flat
6. Around Bugby
7. Around West End

Miles River

Bars completed:

1. Horseshoe
2. Turtle Back
3. Hambleton Hill
4. Hambleton
5. Wye Town
6. Sycamore
7. Wildground

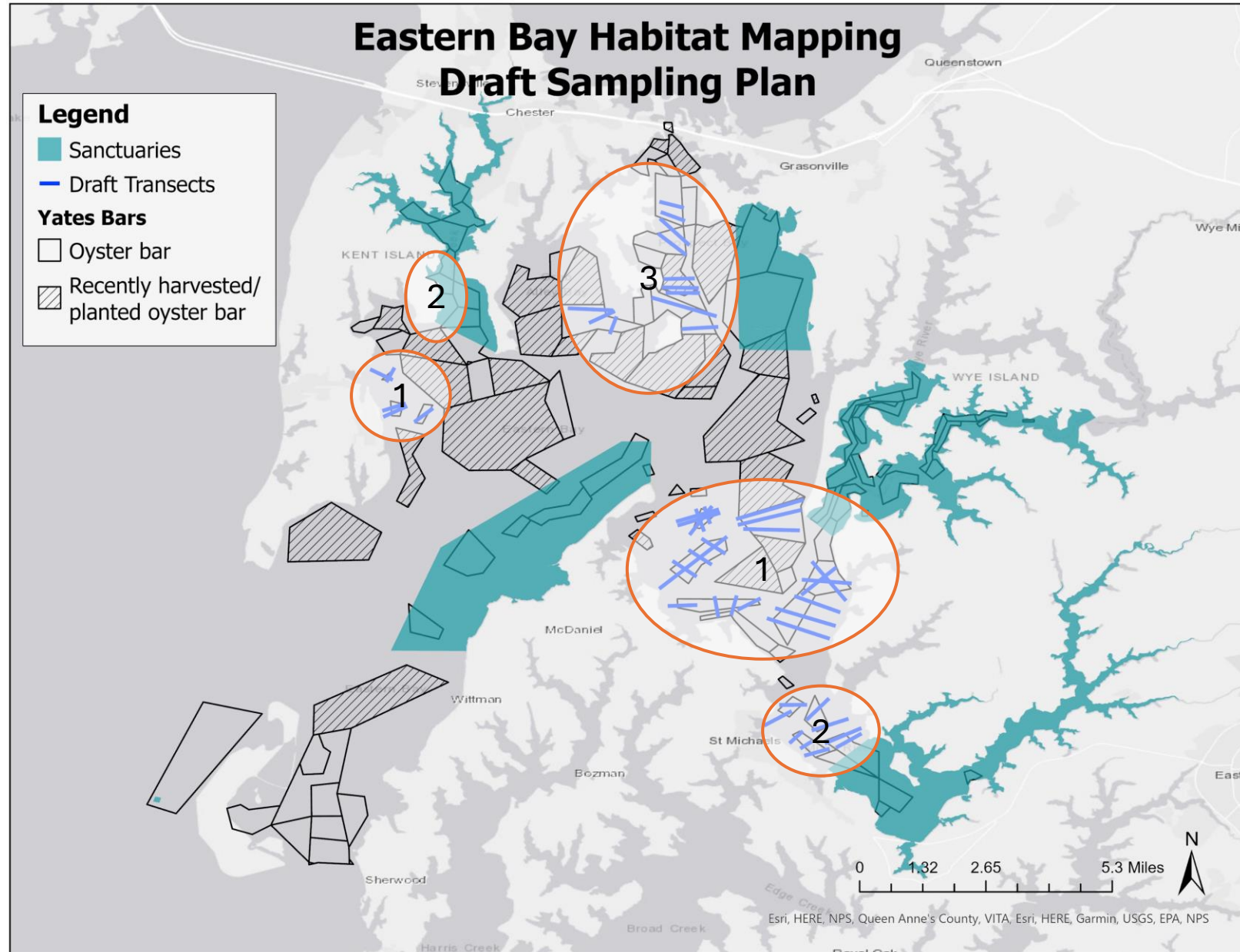




- Shell found on most (but not all) dark areas on MGS map, consistently along ridges of bars
- Large rocks found on Turtle Back and Hambleton Hill
- Gradient of shell to sand from ridge → shore

Next steps

- Complete initial monitoring (sounding pole, ponar, video)
 - Two more days in Miles River
 - Prospect Bay/Crab Alley Bay next
- Conduct PT sampling on areas that had shell/oysters



Video Examples

Hambleton – loose shell/oysters



Turtleback – Large rocks with barnacles/oysters

Hambleton Hill – Large rocks with barnacles/oysters



Hambleton Hill – Sand with loose shell

MR Wildground – Loose shell