

Eastern Bay Habitat

Oyster Coalition Workgroup - Meeting #5

September 25, 2024

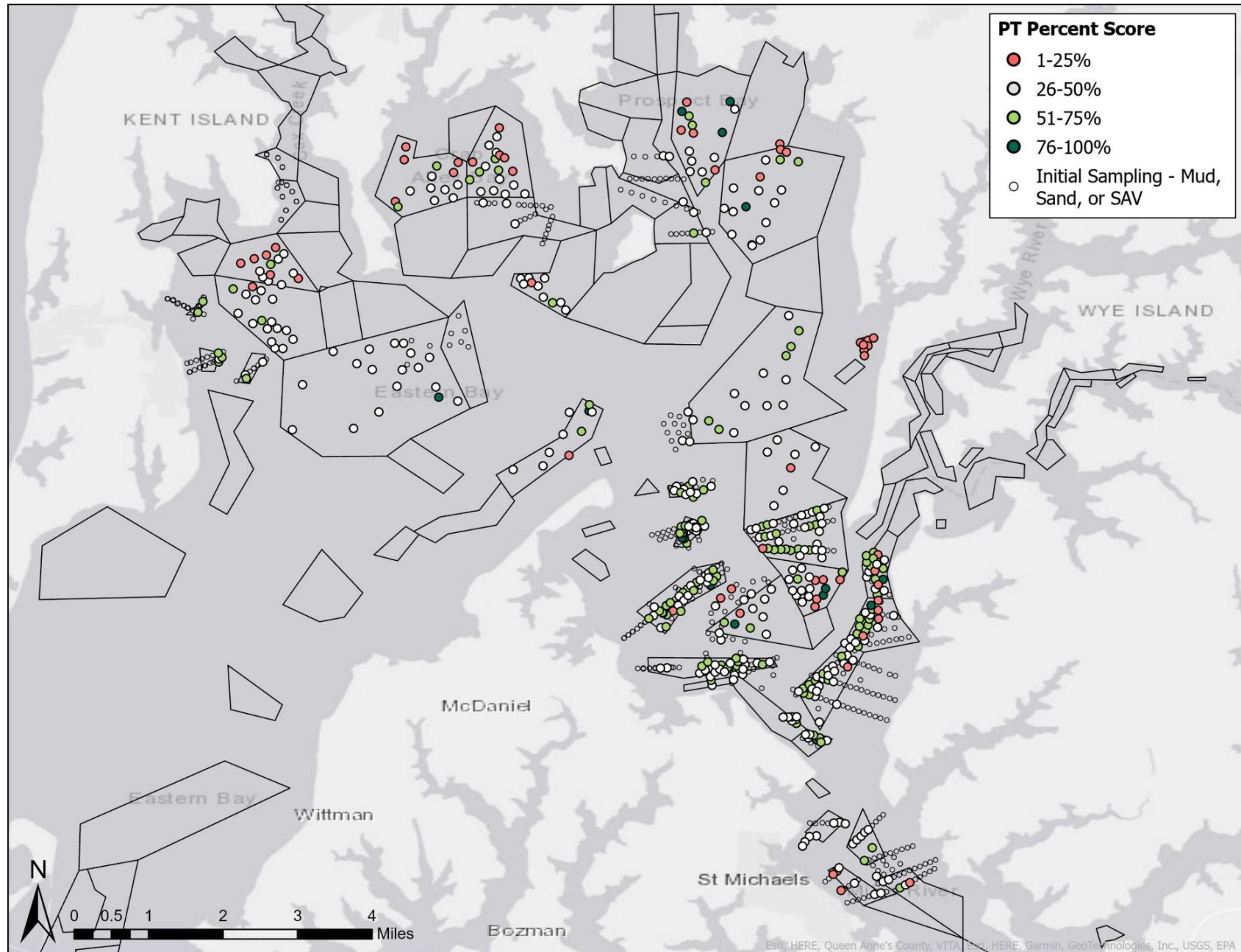
Habitat Survey Results

> 25% = Areas that can support enhancement

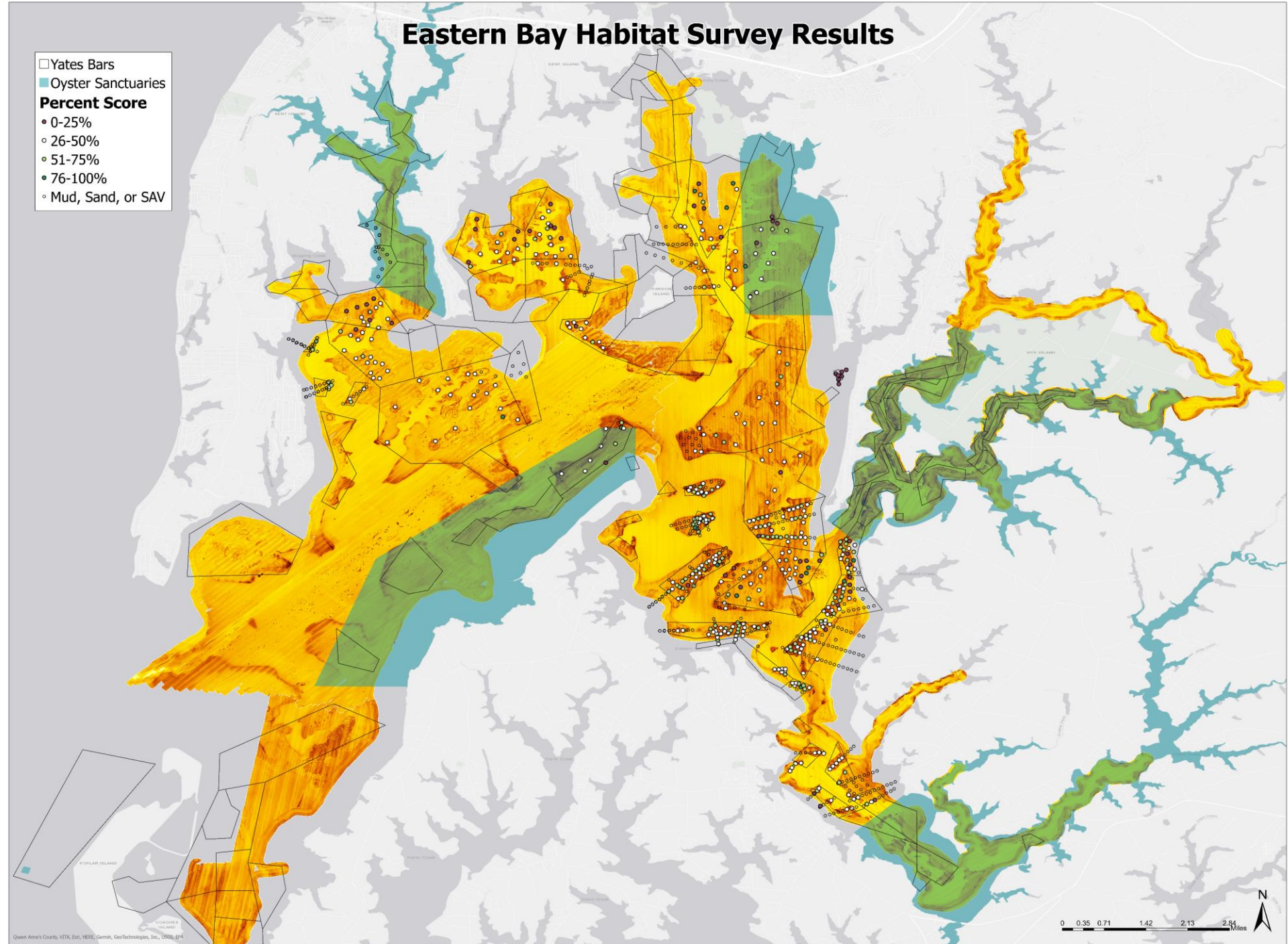
- Few oysters
- Sufficient cultch
- Some areas require more investment
- 5,800 acres (68% surveyed area)

< 25% = No existing oyster habitat

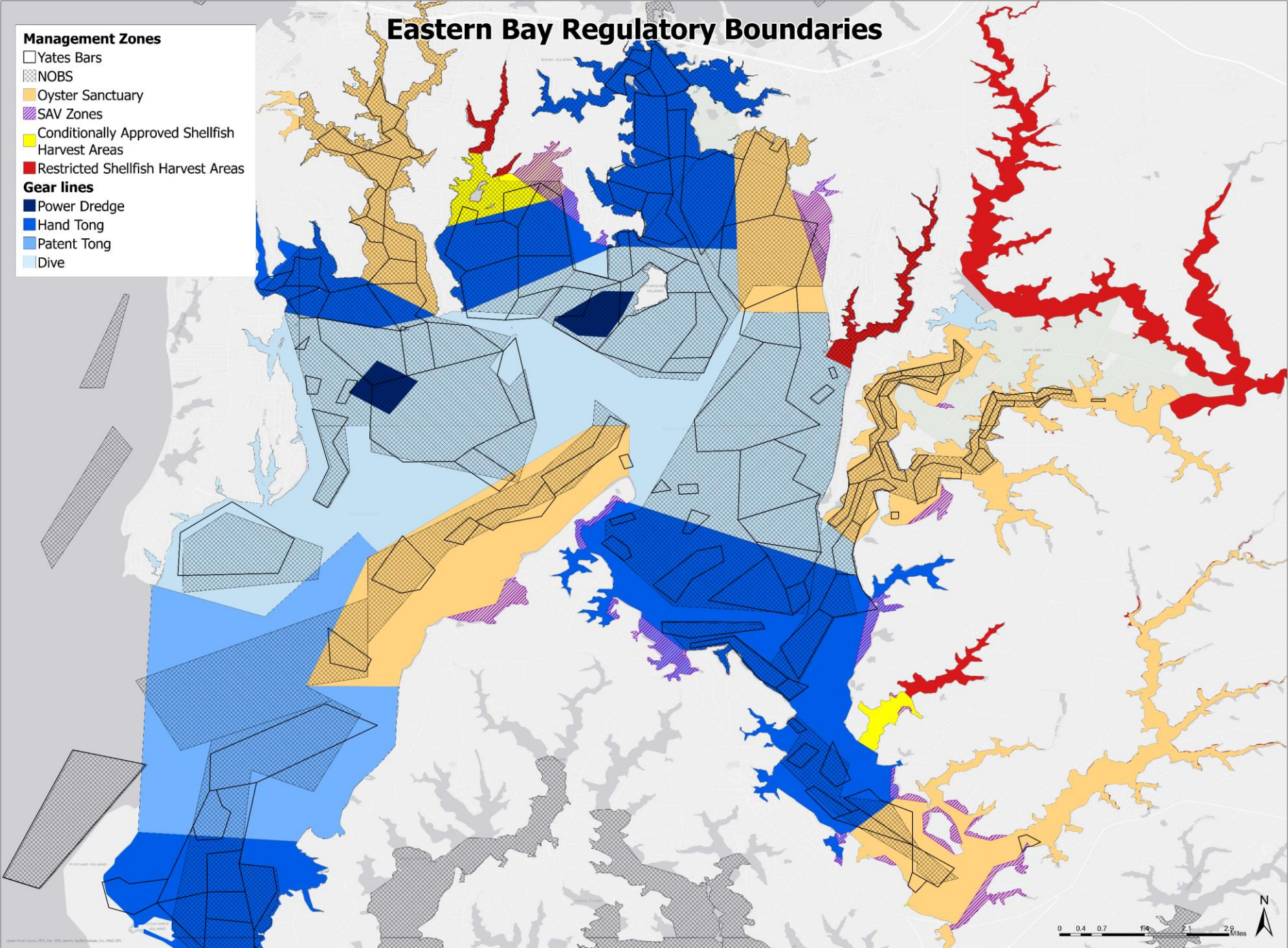
- No cultch
- 2,700 acres (32% surveyed area)



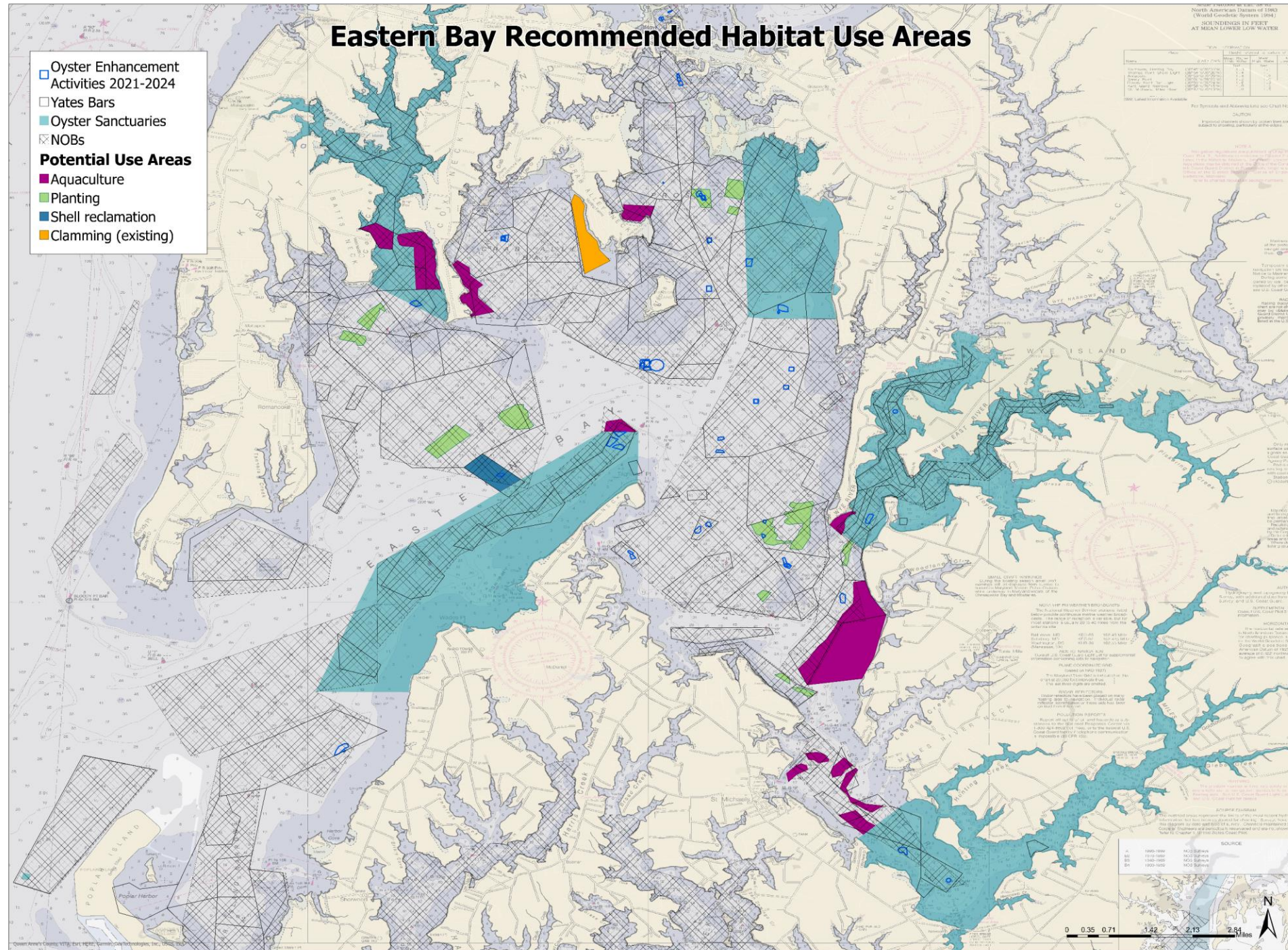
Habitat Survey Results & Sidescan



Existing Eastern Bay Regulatory Boundaries



Integrated habitat data
and OCW member input

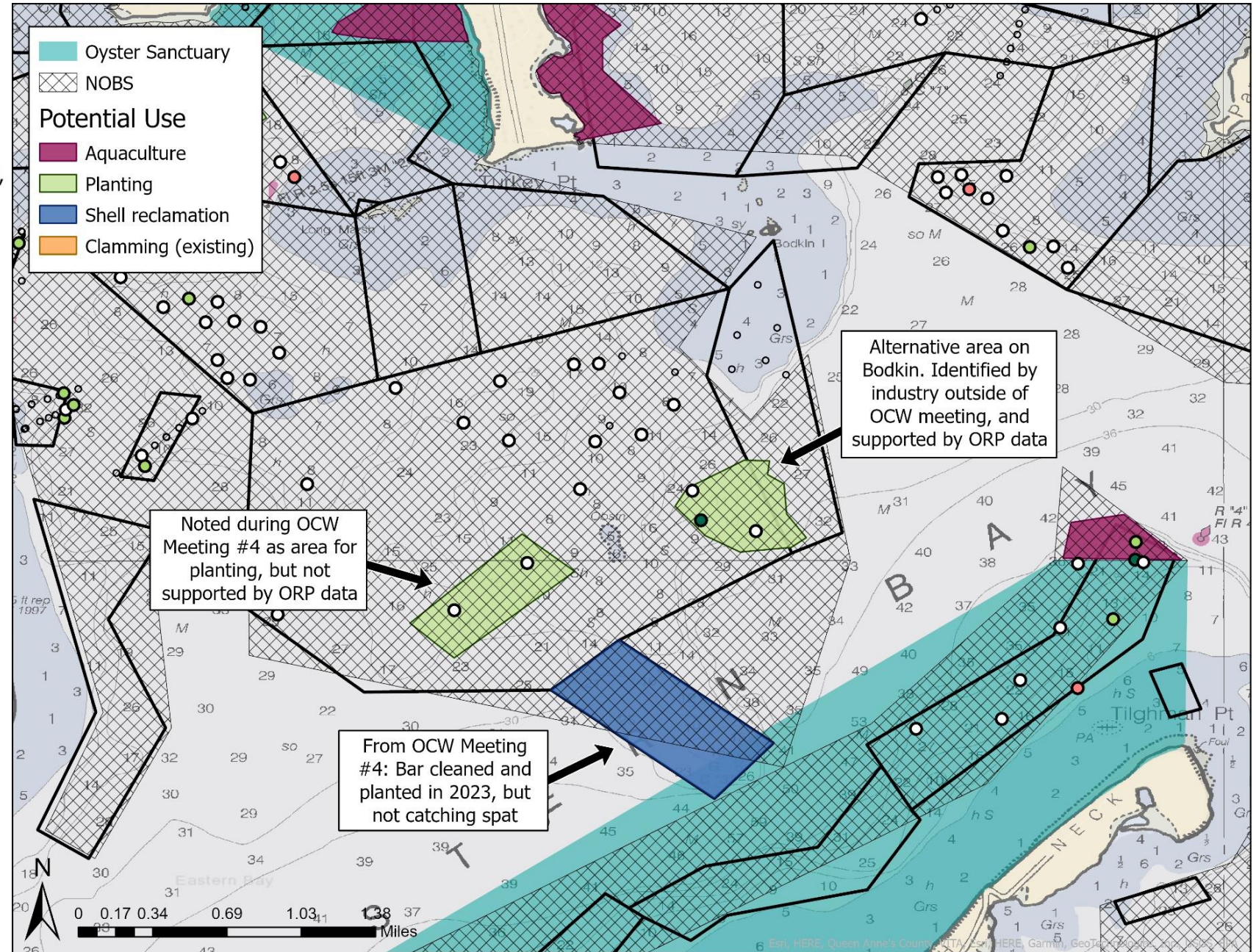
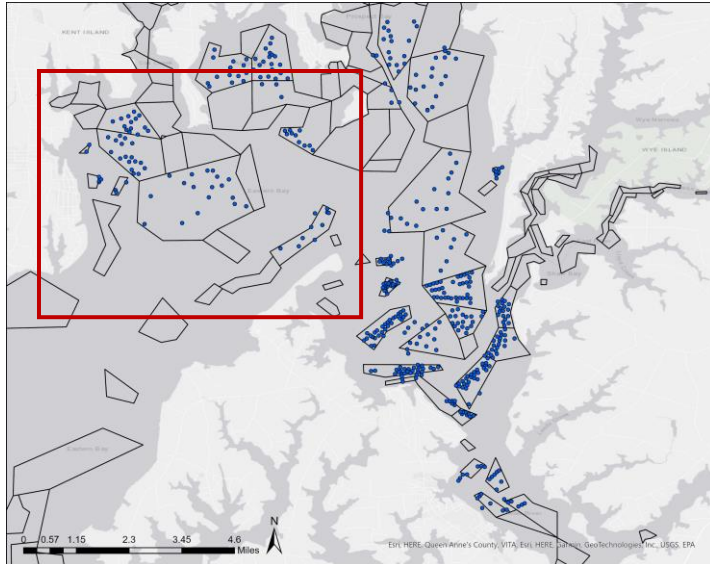


Habitat Score

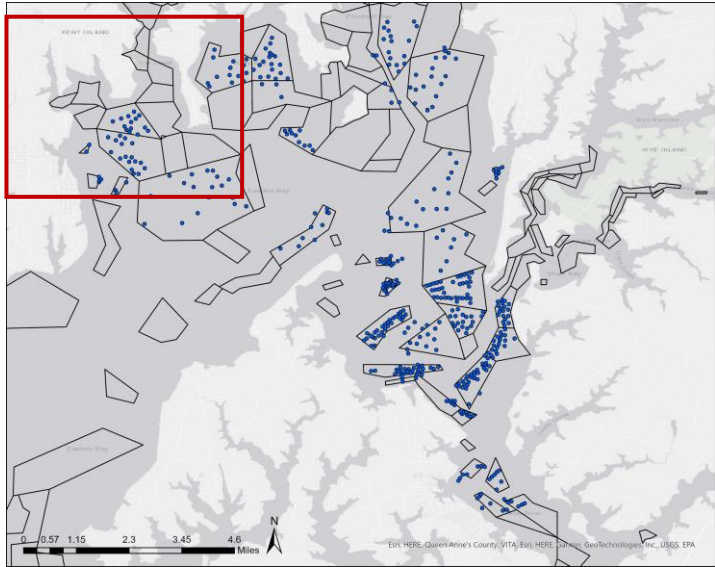
- 1-25%
- 26-50%
- 51-75%
- 76-100%
- Initial Sampling - Mud, Sand, or SAV

- Oyster Sanctuary
- NOBS
- Potential Use
 - Aquaculture
 - Planting
 - Shell reclamation
 - Clamming (existing)

Western Eastern Bay

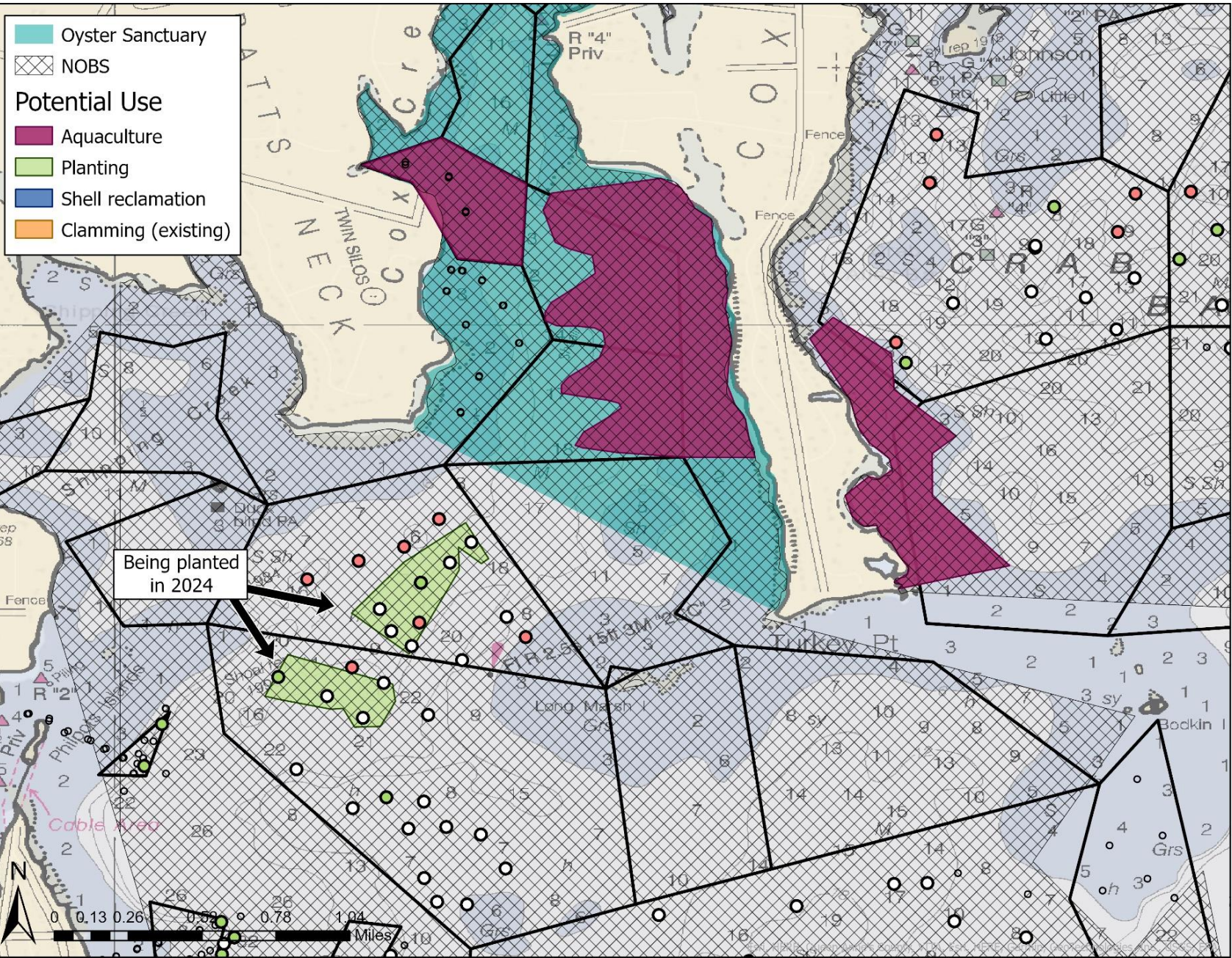


Cox Creek Area

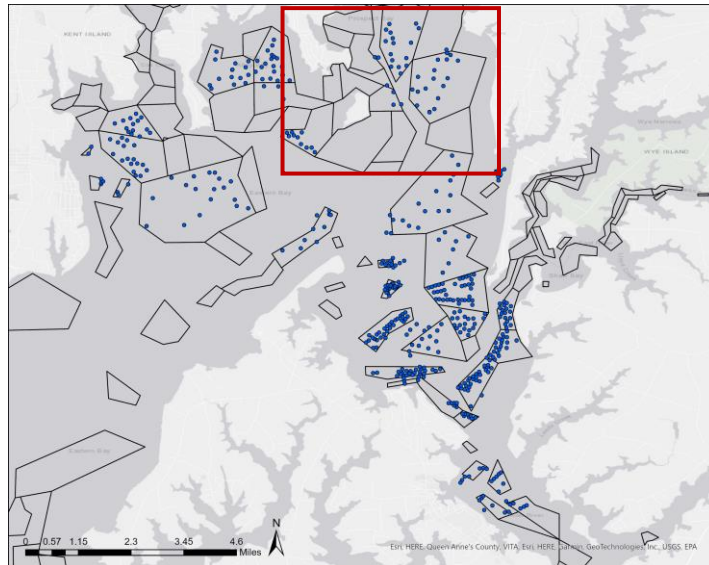


Habitat Score

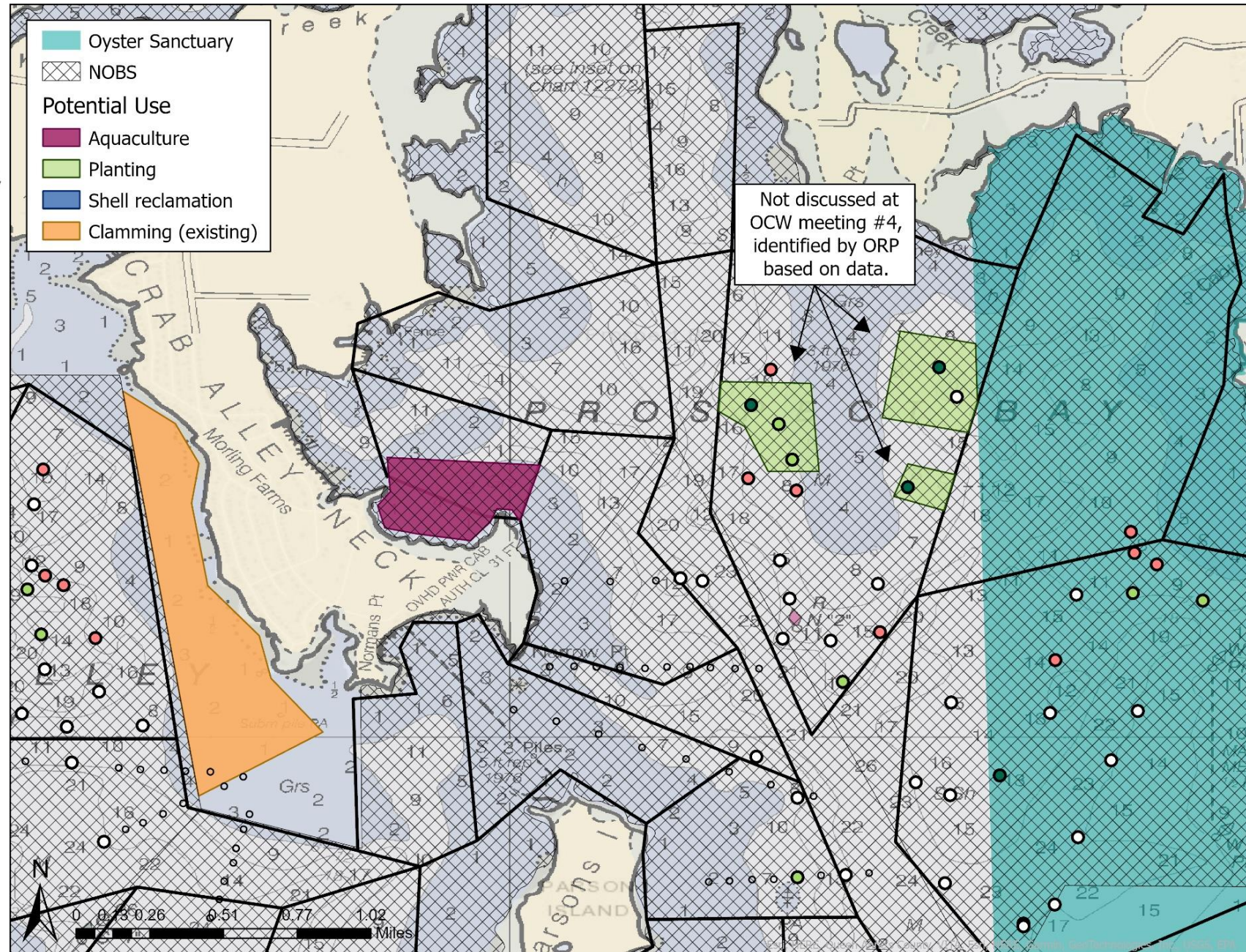
- 1-25%
- 26-50%
- 51-75%
- 76-100%
- Initial Sampling - Mud, Sand, or SAV



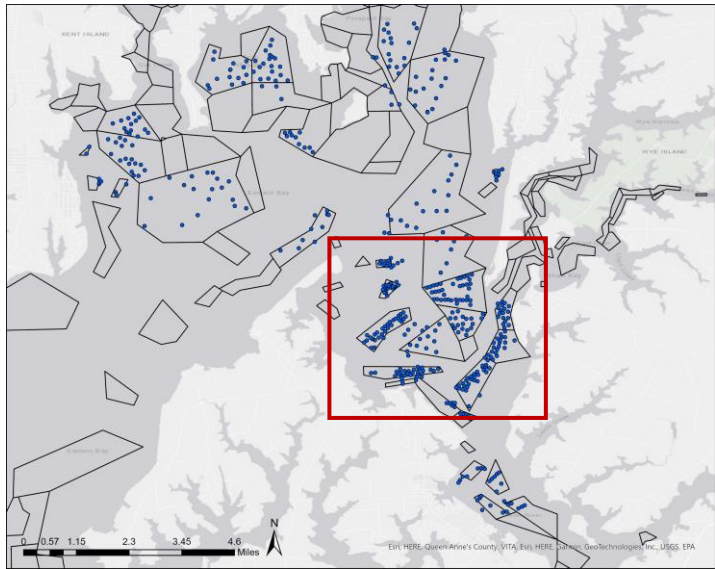
Prospect Bay



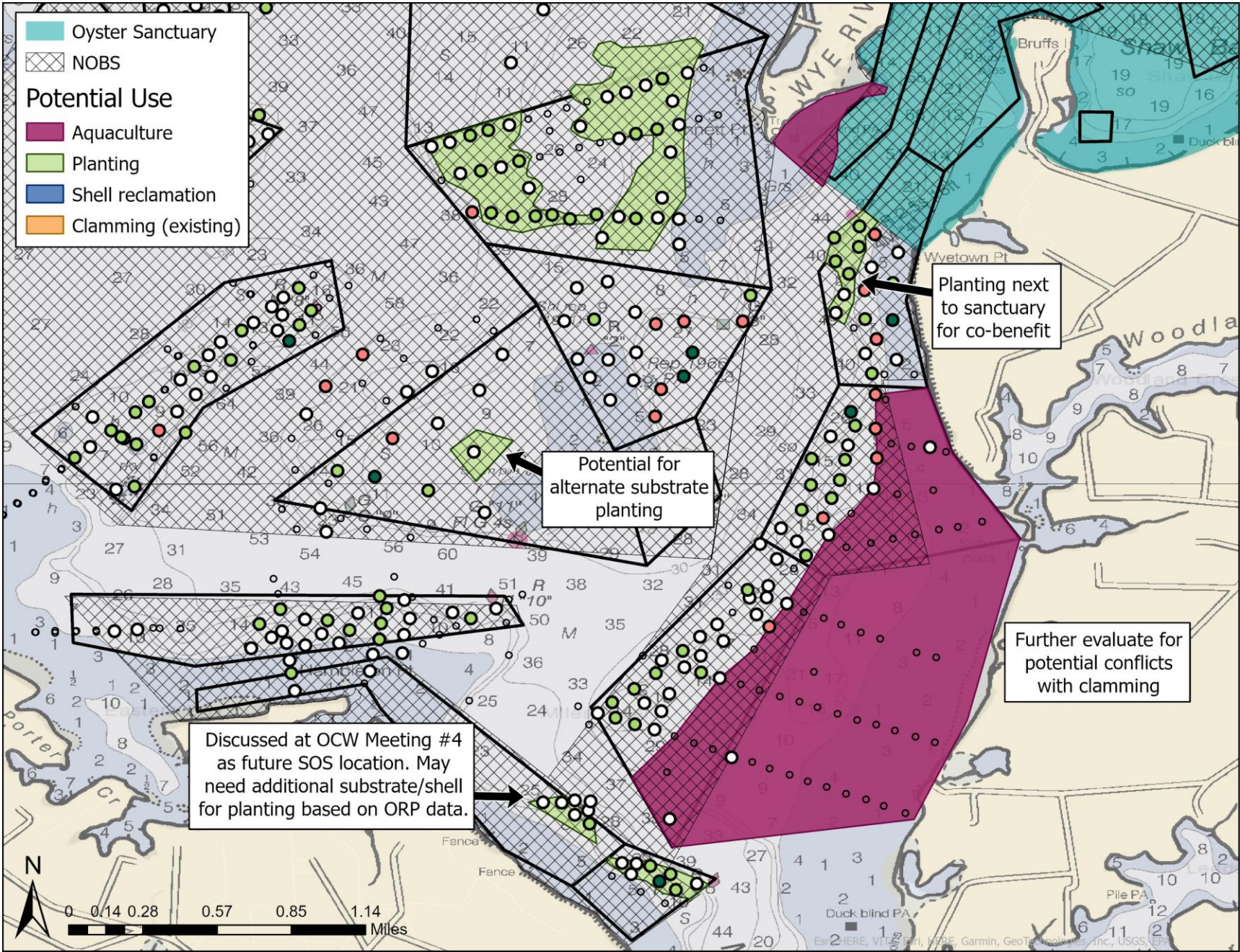
- Habitat Score**
- 1-25%
 - 26-50%
 - 51-75%
 - 76-100%
 - Initial Sampling - Mud, Sand, or SAV

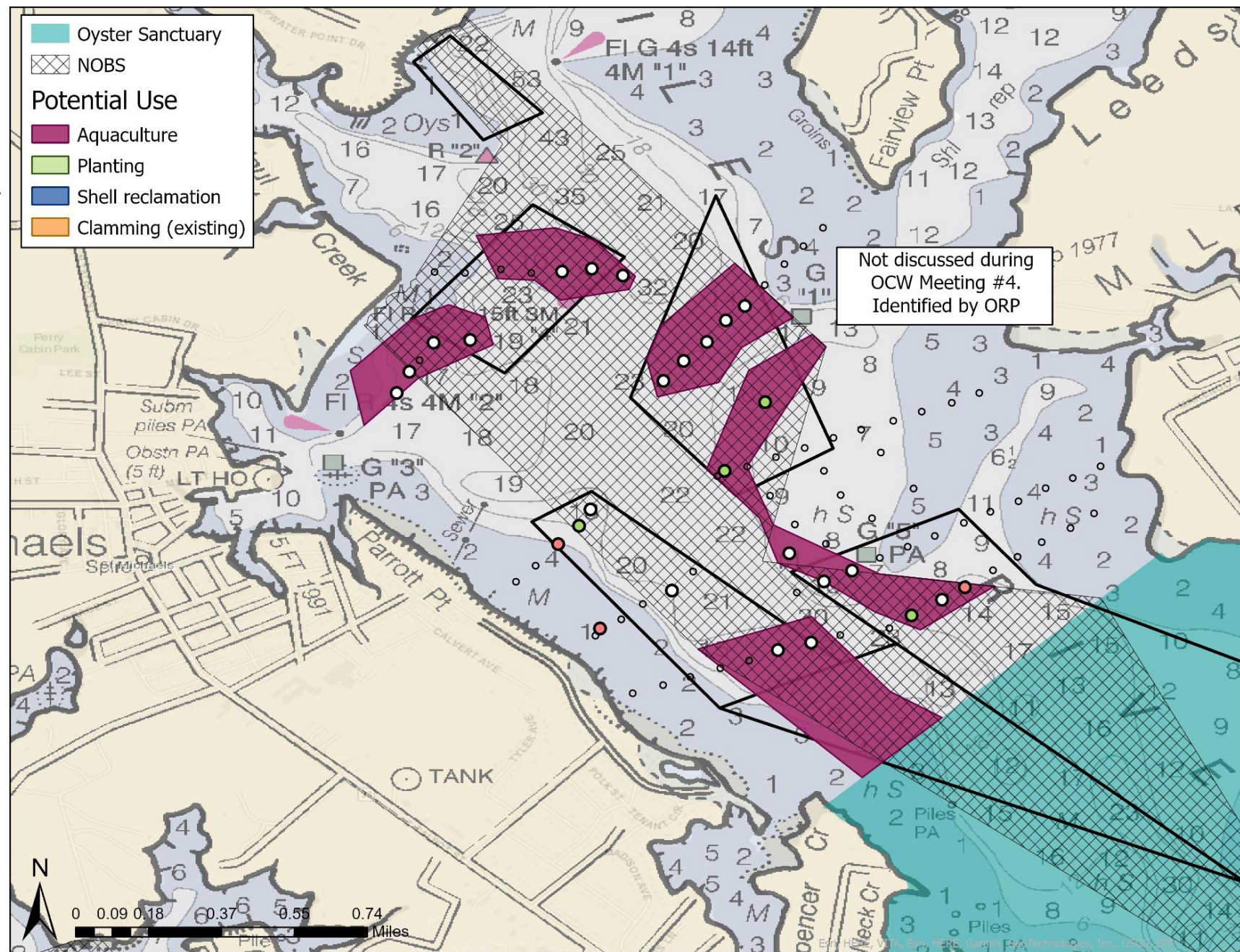


Southern EB/ Lower Miles River



- Habitat Score**
- 1-25%
 - 26-50%
 - 51-75%
 - 76-100%
 - Initial Sampling - Mud, Sand, or SAV





Discussion Topics

- Do you agree with the proposed uses and locations from last meeting?

Discussion Topics

- Do you agree with the proposed uses and locations from last meeting?
- Are there other uses or locations to discuss?
 - Clamming
 - Alternate substrates
 - Sanctuary restoration
 - Hand tong areas
 - Areas close to shore

Discussion Topics

- Do you agree with the proposed uses and locations from last meeting?
- Are there other uses or locations to discuss?
 - Clamming
 - Alternate substrates
 - Sanctuary restoration
 - Hand tong areas
 - Areas close to shore
- Does the OCW recognize that areas identified as unproductive oyster habitat could be evaluated for other uses?

Discussion Topics

- Do you agree with the proposed uses and locations from last meeting?
- Are there other uses or locations to discuss?
 - Clamming
 - Alternate substrates
 - Sanctuary restoration
 - Hand tong areas
 - Areas close to shore
- Does the OCW recognize that areas identified as unproductive oyster habitat could be evaluated for other uses?
- Was this process useful?