

Eastern Bay Oyster Coalition Workgroup

Habitat Uses Discussion Summary

Meeting 4 – July 31 and August 1, 2024

This document summarizes the discussion held at the Eastern Bay OCW Meeting 4 on August 1, 2024. The discussion focused on the following topics:

- Priority planting locations – specific bars or portions of bars that need additional cultch vs. spat
- Sanctuary data and co-siting plantings between management zones
- Aquaculture siting locations
- Areas that could be candidates for moving or reclaiming shell (gray shell)
- Evaluate locations where harvest gear types could be adjusted
- Draw lines to divide and/or remove bars from fishery

Potential or proposed locations for these activities were drawn in GIS during the meeting. Annotated maps outlining these locations and potential uses follow.

Some general themes and questions emerged from this discussion:

- Most areas discussed for planting were discussed for planting spat-on-shell unless otherwise stated
- Potential areas for expanding aquaculture (bottom and water column leases) will require modifying Yates Bars, Natural Oyster Bars, and PSFA regulatory boundaries. This requires additional input from DNR.
- Potential aquaculture areas were sited in locations that:
 - Have not been harvested recently
 - Logistically feasible (e.g., protected from wind, close to land operations, etc.)
 - Have habitat scores within 25-50% range
- Potential aquaculture areas will need to be evaluated further by considering additional stakeholder uses, including crabbing and clam areas, where people hand tong, etc. to minimize conflict
- There are some areas that have received bar cleaning and previous plantings that have not been productive. These areas would be better suited for areas where shell can be reclaimed and moved to other productive bars.

At the next meeting on September 25, OCW members will use these maps to identify areas where regulatory boundaries can change to support the new proposed use.

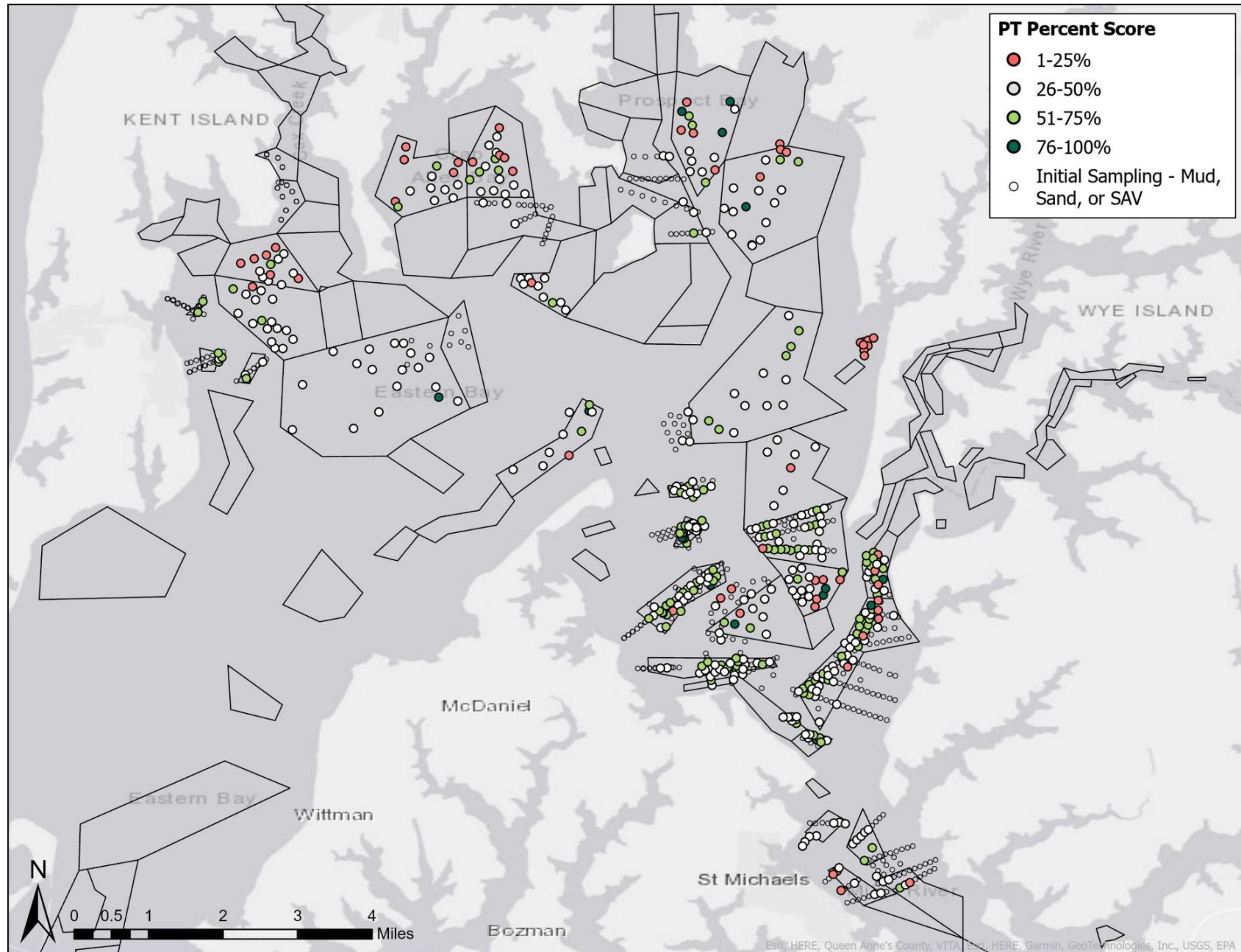
Habitat Survey Results

> 25% = Areas that can support enhancement

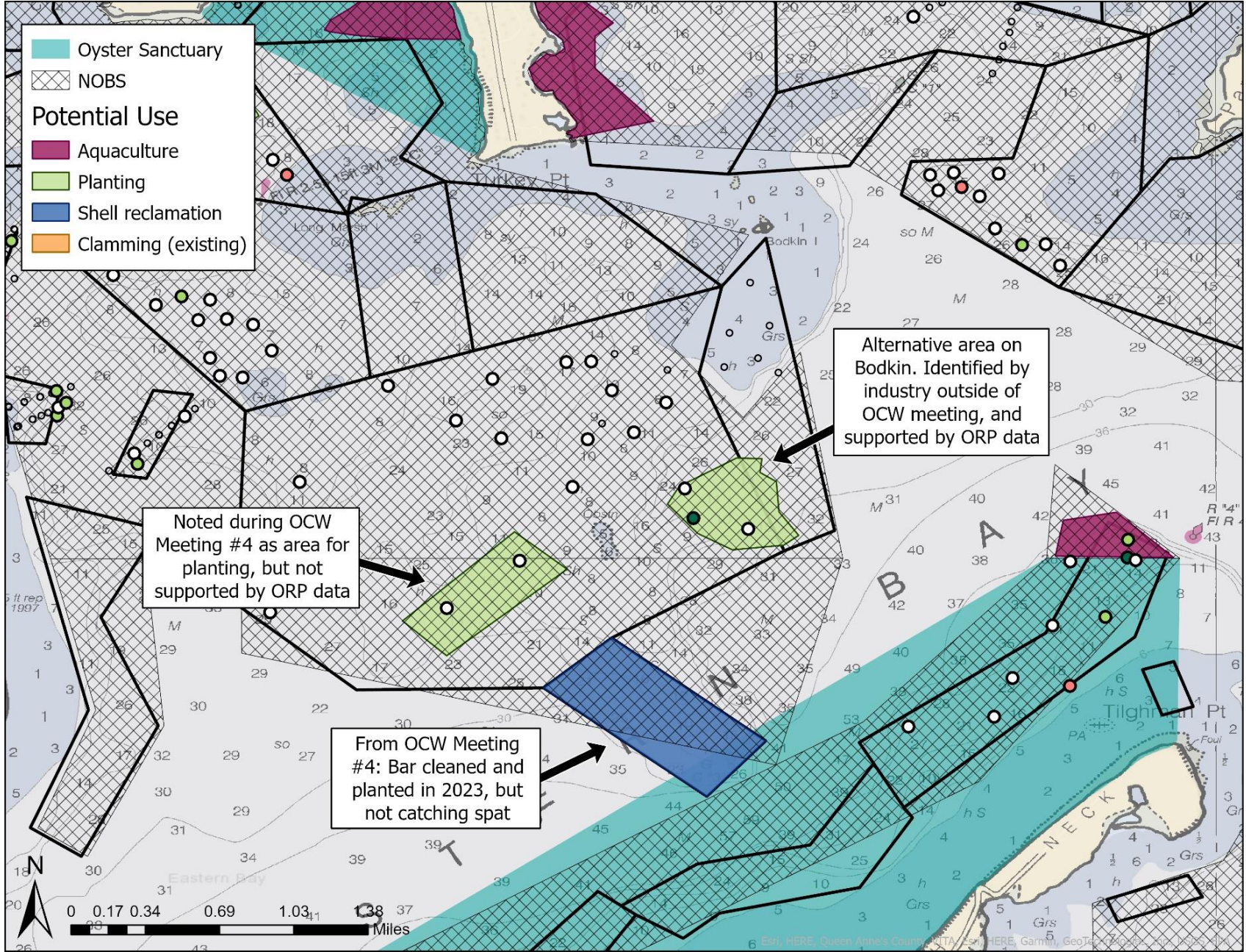
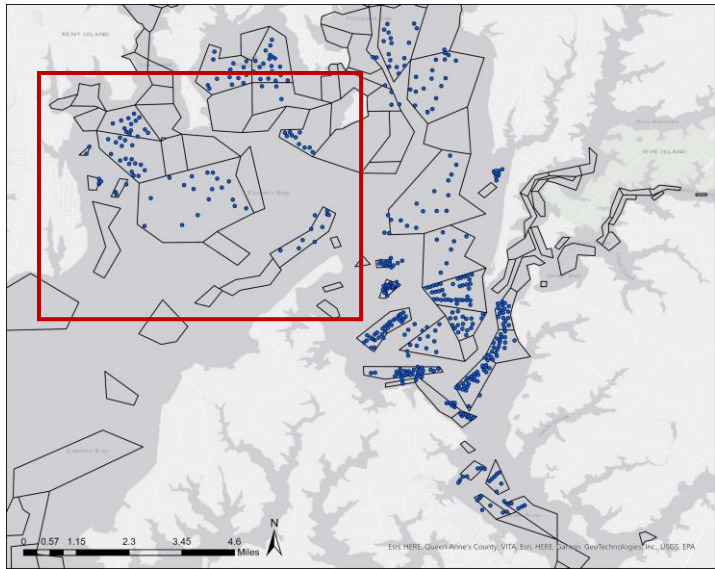
- Few oysters
- Sufficient cultch
- Some areas require more investment
- 5,800 acres (68% surveyed area)

< 25% = No existing oyster habitat

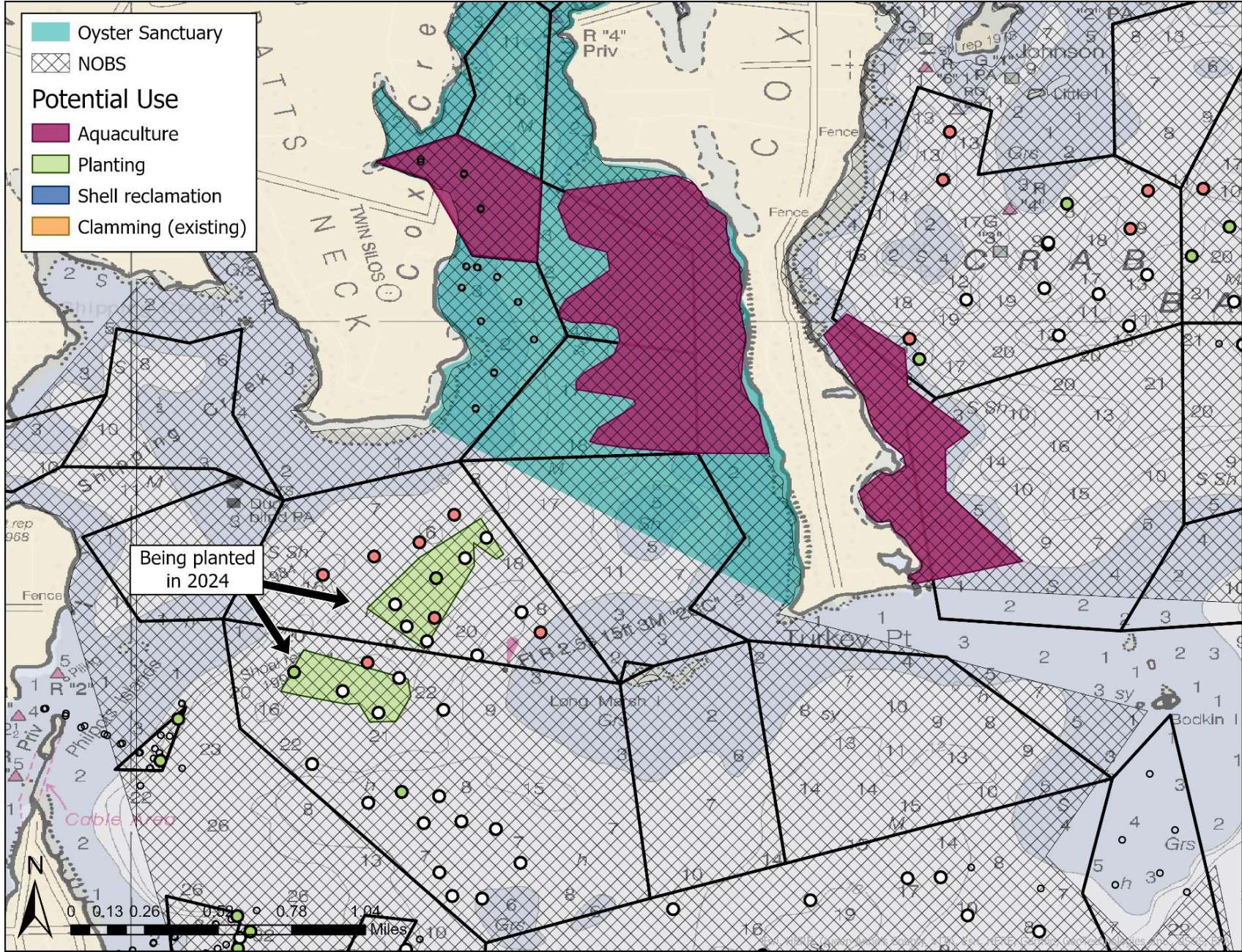
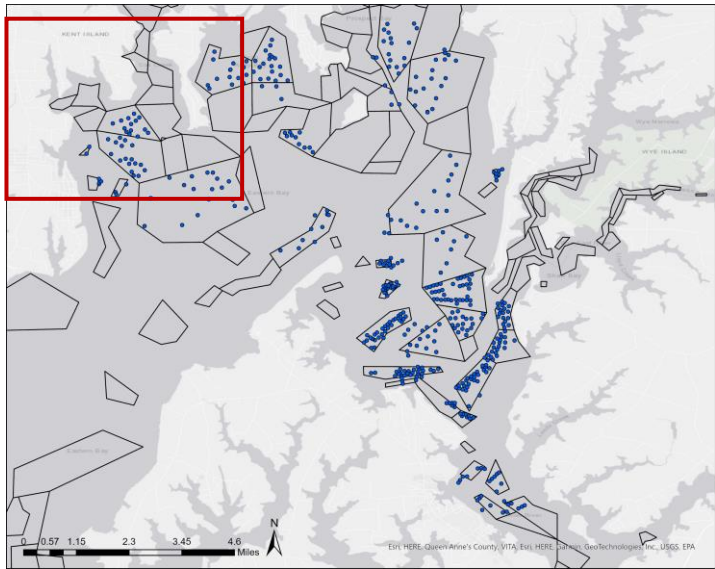
- No cultch
- 2,700 acres (32% surveyed area)



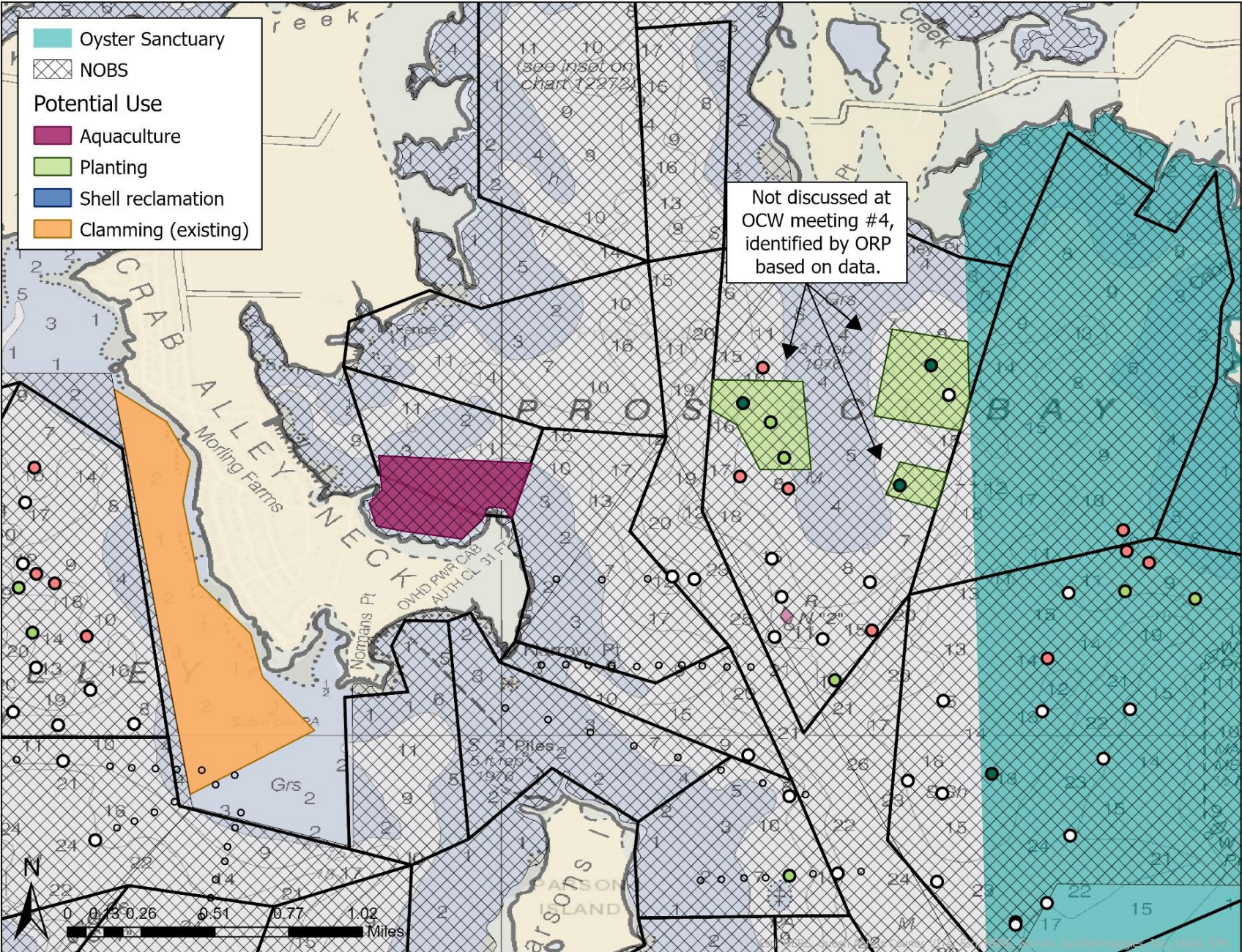
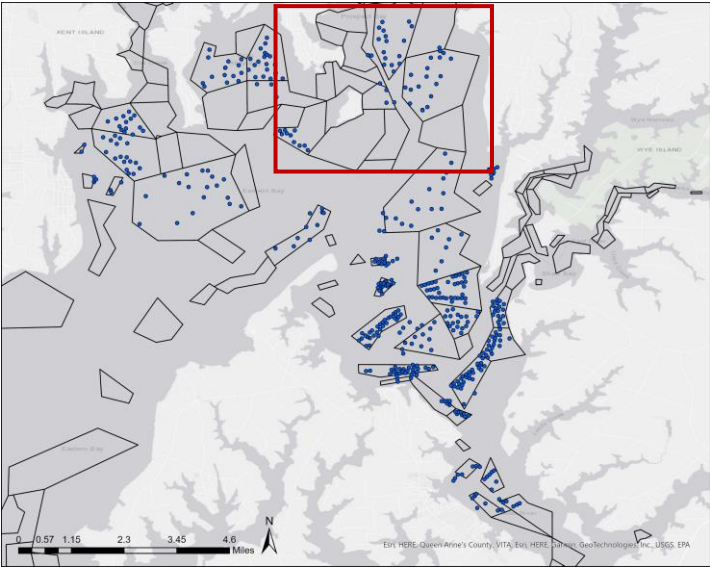
Western Eastern Bay



Cox Creek Area



Prospect Bay



Southern Eastern Bay/ Lower Miles River

